

to GBP pricelist: £

to US dollar pricelist: \$

Don't fence me in

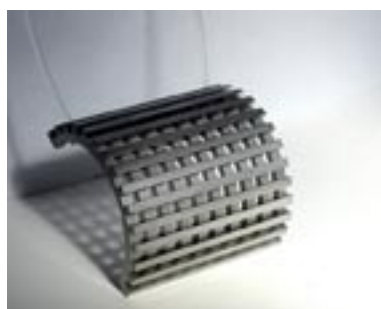
silver white stainless steel

r i n g s

	nr.	w	h	€
fully latticed	1410	7	2.5	188,-
	1412	10	2.5	225,-
	1414	10	bombé 3.0	255,-
	1416	13	2.5	265,-
4x latticed	1418	7	2.5	175,-
	1420	10	2.5	212,-
	1422	10	bombé 3.0	238,-
	1424	13	2.5	265,-
3/4 latticed	1426	7	2.5	175,-
	1428	10	2.5	212,-
	1430	13	2.5	212,-

p e n d a n t s

fully latticed	1432			325,-
	1405			238,-



cord: nylon bajonet catch

1432



© Pycke 1998



material: **ugima** high performance stainless steel /etched.

price does include VAT

Don't fence me in

18 crt. gold

rings

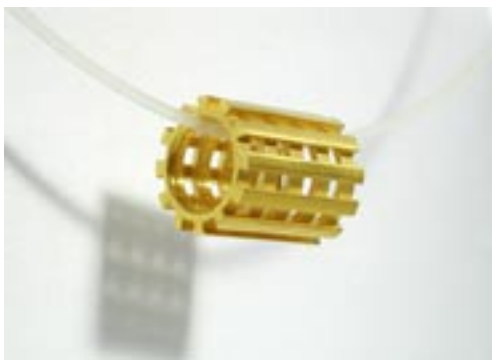
nr.	w	h	€
1400	13	2.5	1088,-
1401	bombé 10	2.5	940,-
1402	7	2.5	565,-
1403	10	2.5	790,-

pendants

1406			515,-
------	--	--	-------

earrings

1407			665,-
------	--	--	-------



© Pycke 1998

material: 18 crt. gold. cord: nylon



7 mm



13 mm



10 mm

morse®

18 crt. gold

rings

standard text: love

nr.	w	h	€
1210	3.5	1	265,-
1212	5.0	1	338,-
1214	6.0	1	390,-

pendants

1216	205,-
------	-------



1214



1216

© Pycke 1996

material: 18 crt. gold. cord: nylon

Weddingbands

18 crt. gold

r i n g s

nr.		w	h	€
1860	b o m b é	4 . 5	2	550-,-
1862		4 . 5	2	550-,-



© Pycke 2001

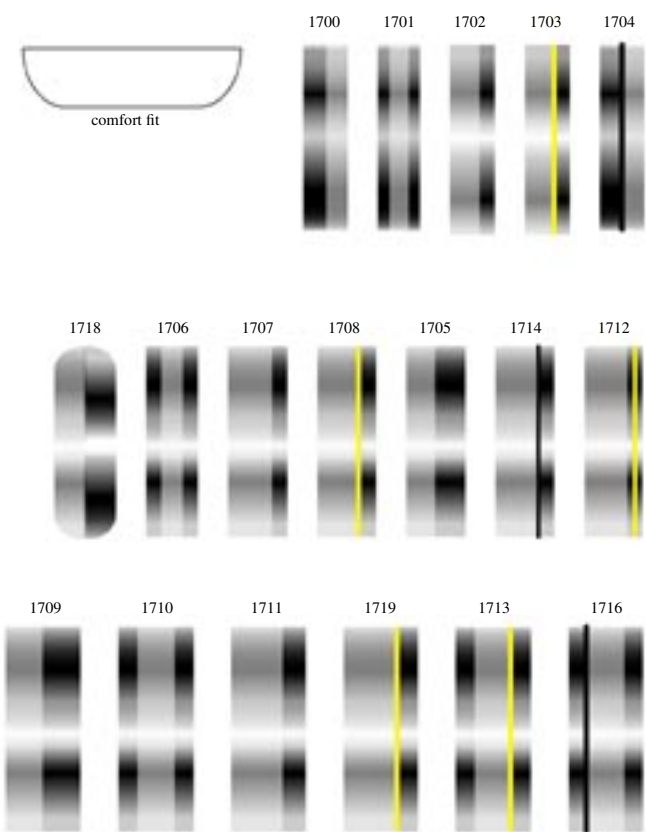
material: 18 crt. gold / forged

Built jewellery:

materials:

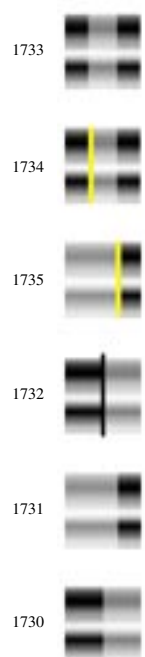
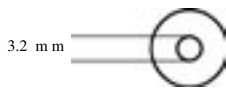
titanium/steel/gold

r i n g s



nr.	w	h	€
1700	6	2	175,-
1701	6	2	200,-
1702	6	2	175,-
1703	6	2	225,-
1704	6	2	188,-
1705	8	2	195,-
1706	8	2	225,-
1707	8	2	195,-
1708	8	2	250,-
1709	10	2	215,-
1710	10	2	245,-
1711	10	2	215,-
1712	8	2	245,-
1713	10	2	280,-
1714	8	2	205,-
1715	10	2	225,-
1716	10	2	265,-
1718	10	2	215,-
1719	8	2	280,-

p e n d a n t s



1730	10	10	200,-
1731	10	10	200,-
1732	10	10	215,-
1733	10	10	215,-
1734	10	10	265,-
1735	10	10	265,-



material: titanium steel and pure gold



price does not include VAT

Embrace

titanium/steel

r i n g s

s p r i n g s e t t i n g

nr.	w	h	€
2000	8	2.5	200,-
2001	8	2.5	200,-
2010	8	2.5	188,-
2012	8	2.5	200,-

p e n d a n t s

2052	200,-
2053	225,-



2001



2010



2053



2052

© Pycke 1996

material: titanium and tempered steel. stone: fbs

price does not include VAT

morse

blue series

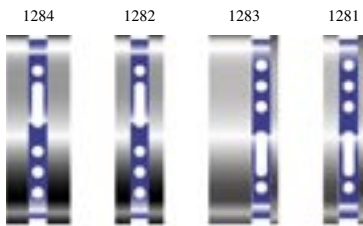
rings

standard text: love

nr.	w	h	€
1281	6	2	145,-
1282	6	2	145,-
1283	8	2	155,-
1284	8	2	155,-

pendants

1280	170,-
------	-------



material: titanium

© Pycke 1998



price does not include VAT

morse

blue inch

rings

standard text: love

nr.	w	h	€
1291	12	3.0	215,-
1292	10	3.0	200,-
1293	8	3.0	225,-
1294	8	2.5	230,-

pendants

1290	188,-
------	-------

1290



1293



© Pycke 1998

material: titanium



price does not include VAT

Möbius

titanium/steel/rubber

bracelet width: \emptyset 50mm t/m 90mm

nr.		€
6500	titanium	200,-
6501	steel	140,-
6502	viton flat	285,-



material: titanium or steel / rubber

© Pycke 1973

price does not include VAT

Earrings

titanium/steel/gold

c r e o l e s

nr.	w	h	€
3500	3	14	150,-
3502	3	14	115,-
3503	6	14	150,-

3502



steel/steel

3502



© Pycke 1989

material: titanium/steel or titanium/gold



price does not include VAT

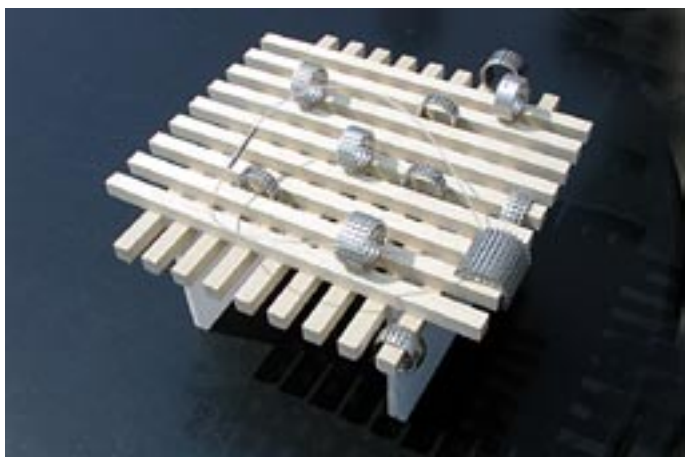


Fire at night and smoke at daylight have for centuries been the only means to communicate fast over long distances. To understand each other man had to agree over the meaning of signals. It is evident that for communication to succeed there was a dependence on the weather. In 1809 the German physician **S. Sömmeringh** demonstrated a primitive telegraph based on the development of gas bubbles in a galvanic cell. Other scientists developed machines that used the deflection of pointers on a scale. In the USA there was much experimentation: 'Samuel Morse was working on an apparatus that was based on a stylus being attracted by a magnet. The first telegraph connection between two cities came into being in 1844. The first trans-Channel connection between Dover and Calais 7 years after that, in 1851.

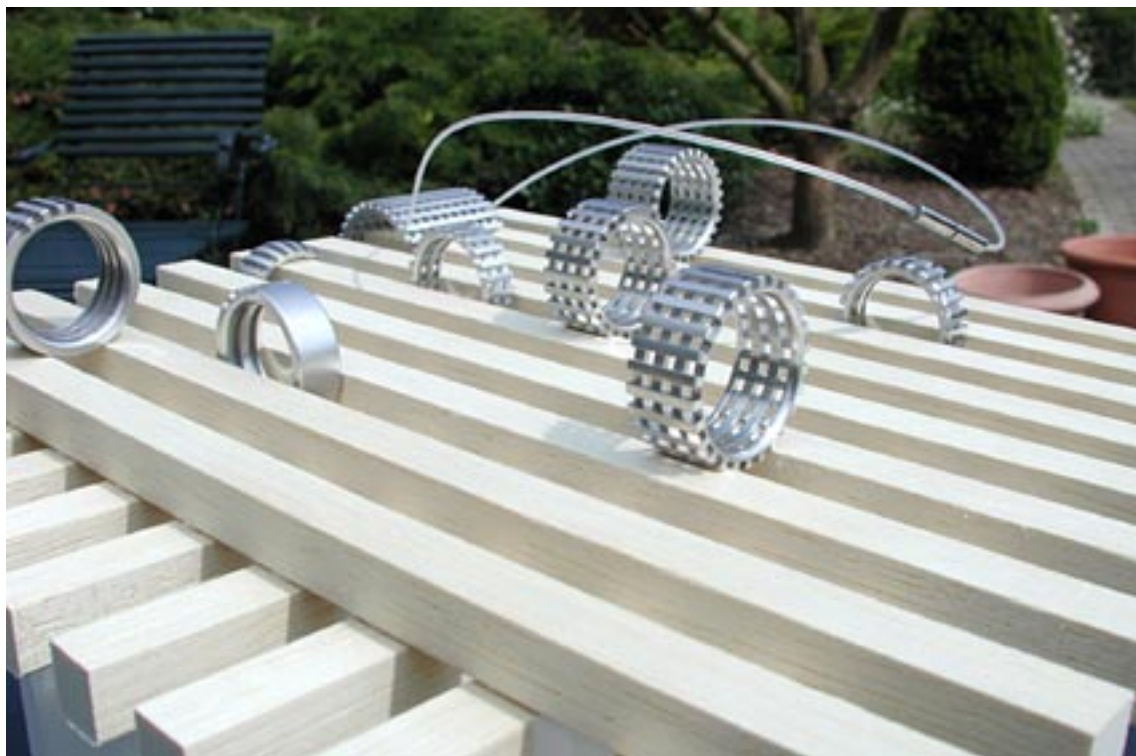
The developments in physics made it possible to communicate by the speed of light. **Samuel Morse** invented the language needed to work efficiently with the new medium. The well-known dash-dot code; the mysterious beeps on the radio that manifested itself once in a while when tuning for a new radio station and that evoked associations of ships in distress on the high seas, coal and steam engines. Radio London's signature tune during WWII: dot-dot-dot-dash, the V for victory! The morse code has been used until recently. Developments in modern electronics made the morse code much a part of history. The morse alfabet is brilliant in its simplicity, built as it is with dots and dashes. Different combinations of dots and dashes form codes for letters, numerals and even punctuation marks, an ideal secret code!



window display 200 x 200 x 90 mm



silverwhite stainless steel



Steellinen

titanium/stainless steel

r i n g s

Steel lined rings

In 1988 Pycke developed a technique to line titanium rings on the inside with gold. This technique was unearthed again, this time with steel linings.

Titanium rings with a stainless steel lining, virtually indestructible, made to be worn 24 hours a day. The makers are confident enough to give a 5-year guarantee. The guarantee includes the after sales service of changing the diameter.

The rings are composed of two parts, a massive titanium **kernel**, and a steel **lining**. The seamless steel lining is pressed around the kernel. In the process the steel lining is heated beyond 1.000 Centigrade. This makes for a strong, virtually indestructible piece of work. The rings are for the greater part made by hand.

Widths: 3-4-5-6 mm. Lining: high gloss; titanium kernel: etched in a matte finish. A number of rings have golden accents (18 carat yellow or red), and machine set diamonds and/or real sapphire.

	nr.	w	h	€
titanium stainless steel	MA03	3mm	2mm	150,-
	MA04	4mm	2mm	165,-
	MA05	5mm	2mm	175,-
	MA06	6mm	2mm	188,-
titanium stainless steel 18 crt. yellow line 0.6 mm	MY04	4mm	2mm	225,-
	MY05	5mm	2mm	238,-
	MY06	6mm	2mm	250,-
titanium stainless steel 18 crt. red line 0.6 mm	MR04	4mm	2mm	225,-
	MR05	5mm	2mm	238,-
	MR06	6mm	2mm	250,-
titanium stainless steel +2mm saffire or 0.02 crt. diamond	MS06	6mm	2mm	300,-
	MD06	6mm	2mm	415,-



© Pycke MWII



price does not include VAT